

F

CLASS



EXPERIENCE THE
EXCEPTIONAL

Your yacht is an extension of yourself. A statement of your lifestyle. She needs to deliver unforgettable experiences for you, your family and friends. Every Princess yacht is designed with our forward-thinking mentality and crafted with meticulous attention to detail. So whether you're dashing across the water or moored in your favourite bay, you will recognise the difference our design and details make, inside and out.

Experience the exceptional.



CRAFTED IN PLYMOUTH

Perched on the edge of the English Channel lies the city of Plymouth, where we established our home in 1965. Today Princess shipyards cover an area of over 1.1 million square feet, an area rich in British maritime heritage. In fact, South Yard, where our X Class Super Flybridge yachts are constructed, is a former naval yard dating back to the 17th century. From the outset, our goal has been to meticulously sculpt our yachts around our owners' enjoyment of them. Such dedication and attention to detail resonates deeply with our Plymouth craftspeople.

Over 3,000 people, each possessing a mastery of their skill, fastidiously realise this vision in our shipyards. Through a culture of innovation, our yachts are not only some of the most technically-advanced in the world but also the most beautifully realised.



BEAUTY IS ALWAYS IN THE DETAIL

We are determined to develop ever more ingenious ways to ensure every last millimetre of your boat is ergonomically sound, highly practical, and spatially perfect. Once our team of naval architects, designers and engineers have determined a design, our craftspeople fastidiously bring it to life. Every beautiful detail is crafted and finished within our Plymouth shipyards. This enables us to consistently monitor quality throughout each build. Seeing is believing though, so we invite future owners to pay us a visit and see beauty in progress through their own eyes.





F CLASS

Experience the most technically advanced and spaciouly proportioned flybridge yachts on the water. Every Princess flybridge yacht rewrites the rule book on space, performance and entertaining. Wonderfully progressive, incredibly efficient, classically Princess.

F50



Featuring the latest F Class exterior styling, and advanced technology on-board, the F50 flybridge yacht delivers dynamic performance at sea.

The F50 features a sophisticated standard of refinement with contemporary finishes and handcrafted elements throughout. The sociable cockpit leads through to the main saloon, with open galley aft and large U-shaped sofa and dining table for six guests.





Guests are accommodated on-board across three beautifully appointed cabins, two of which are en-suite. The spacious full-beam master stateroom invites relaxation, with a double bed, sofa and dressing area. The generous en-suite forward stateroom includes a large double bed with the option of scissor berths to provide flexibility for guests.

New technology is available on-board, including Gyro stabilizers and Volvo Penta Easy boating as an option to complement the F50's advanced resin-infused hull and efficient twin Volvo D8-IPS 800 (2 x 600mhp) engines which provide speeds up to 34 knots.

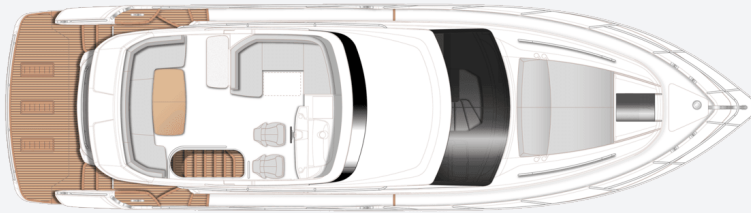




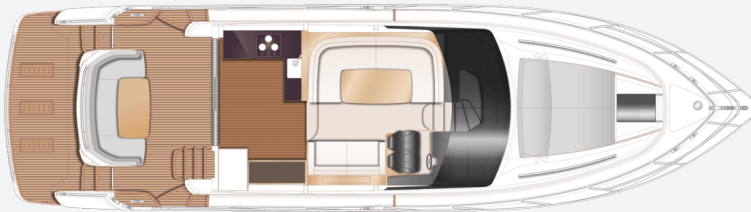
TAKE A VIRTUAL TOUR OF THE F50



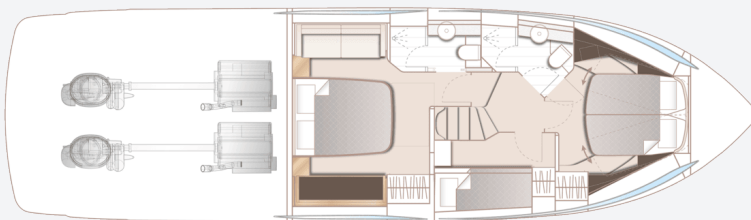
F50
SPECIFICATION



F50 Flybridge



F50 Main Deck



F50 Lower Deck

PRINCIPAL DIMENSIONS

Length overall (incl. pulpit) 51ft 4in (15.65m)

Length overall (excl. pulpit) 49ft 8in (15.14m)

Beam 14ft 1in (4.30m)

Draft (at full load) approx. 4ft 7in (1.39m)

Displacement approx. 22,893kg (50,4710lbs)*

Fuel capacity 406 gal/488 US gal/1,850l

Water capacity (excl. calorifier) 92 gal/111 US gal/420l

ENGINES

Twin Volvo D8 IPS 800 (2 x 600mhp) Speed range: 32-34 knots*

FULL SPECIFICATION

DECK FITTINGS

- Teak-laid transom platform, cockpit deck, flybridge stairway and steps to side deck
- Reversible electric anchor winch with foredeck, main helm and flybridge controls
- Stemhead roller with automatic anchor launch and retrieve
- Self-stowing galvanised Lewmar Delta anchor (20kg/44lbs) with flush pin shackle and 40m of 9.5mm chain
- Deck hatch access to chain locker
- Fender storage
- Stainless steel bow and stern fairleads
- Stainless steel bow, stern and spring cleats
- Stainless steel pulpit and guard rails
- Stainless steel coachroof and flybridge handrails
- Foredeck hatch
- PVC rubbing band with stainless-steel insert
- LED deck level lighting
- Illuminated crown logo to transom
- Full set of IMCO navigation lights
- Riding light

- Twin beam searchlight with dual station remote controls
- Twin electric horns
- Fuel and water fillers
- Foredeck sunbed recess

COCKPIT AND BATHING PLATFORM

- Self-draining
- U-shaped seating/dining area with folding teak table
- LED overhead and deck level lighting
- Stainless steel handrails
- Lockable gas strut assisted hatch to engine room/lazarette
- Liferaft stowage locker
- Storage lockers
- Locker containing remote fuel cocks, manual bilge pump with valve chest and manual controls for automatic fire extinguishers
- Integral stairway to flybridge with teak step treads
- Twin transom gates leading to bathing

platform

- Hot and cold transom shower
- 220/240v shore support inlet
- Cockpit canvas cover
- Transom hatch to stern lazarette
- Transom bathing platform with fold away swimming ladder (electro-hydraulic raise/lower mechanism for transom platform (450kg SWL) is optionally available)

FLYBRIDGE

- Dual station instruments and controls
- Autopilot controls
- Adjustable steering wheel
- Audible and visual alarm for bilge pumps and water in fuel
- Twin helm seats with fore and aft adjustment for helmsman
- Refrigerated top loading coolbox
- Large U-shaped upholstered seating
- Folding teak table
- L-shaped seat (converts to sunbed)

- Fusion Apollo marine stereo system connected to Fusion 7.7" waterproof speakers (2)
- Clear view hatch to aft cockpit
- Wind deflector screens
- Stainless steel handrails
- LED deck level lighting
- GRP radar arch
- Twin matching whip aerials for VHF R/T and radio
- Console and seat covers
- Optional wetbar with barbecue, sink, waste bin and storage
- Optional bimini

HELM POSITION

- Double leather upholstered helm seats
- Console with 16" Volvo/Garmin display incorporating engine instruments and chartplotter
- Dual station instruments and controls at flybridge and lower helm positions:
 - power-assisted steering
 - adjustable steering wheel
 - rudder position indicator
 - high-speed magnetic compass

- electronic engine controls
- joystick control
- trim tab controls with indicators
- electric anchor winch remote control
- speed and distance log (incorporated into 16" screen at lower control position)
- echo sounder with alarm (incorporated into 16" screen at lower control position)
- autopilot
- VHF with DSC R/T and intercom
- remote control searchlight
- horn button
- Drinks holders
- Toughened glass screen (clear for night vision)
- Windscreen wipers with freshwater windscreen wash
- Exterior black mesh windscreen covers
- Bilge pump controls with visual pump running warnings
- 24v and 240v electrical control panel
- Riding light, helm and navigation light control switches
- USB connection point (1)
- LED overhead lighting (24v) and night lighting

- Opening window adjacent to helmsman
- Fitted carpet

DECK SALOON

- Triple stainless steel framed sliding door to cockpit
- U-shaped sofa to port
- Dining table
- Two-seater sofa to starboard
- Fusion Apollo marine audio system connected to Fusion 6" CL602 speakers (2)
- Manual tension Venetian blinds or curtains to all windows
- LED overhead lighting (24v)
- Stairway to lower accommodation
- Fitted carpet

GALLEY

- Solid Surface countertop
- 3-zone ceramic hob
- Extractor fan
- Combination microwave/convection oven with grill
- Stainless steel sink with mixer tap
- Chopping board

- Refrigerator with freezer compartment (155l)
- Optional full height fridge/freezer (270l)
- Waste bin
- Drawers and storage cupboards
- Dedicated crockery and cutlery storage
- Full height larder unit
- Sideboard with storage, drinks fridge and provision for optional ice maker
- Bottle and glassware storage
- Manual tension venetian blinds or curtains to all windows and doors
- LED overhead and task lighting (24v)
- 220/240v outlets (4)
- Timber flooring (V-groove planked)

ACCOMODATION

- All cabins and bathrooms feature opening portholes
- All cabins feature 220/240v power points
- All bathrooms feature electric freshwater toilets and 240v shaver points
- Main companionway has storage space below with option for combination washer/dryer

OWNER'S STATEROOM

- Large double bed with drawers below
- Twin bedside tables
- Wardrobe with shelves
- Dressing table
- Mirror
- Sofa
- Storage lockers and drawers
- Panoramic windows including opening portholes
- Manual tension venetian blinds
- LED overhead lighting (24v)
- Individual berth lights
- 220/240v outlets (2)
- Fitted carpet

EN-SUITE BATHROOM

- Wash hand basin with Solid Surface vanity top
- Mirror
- Storage lockers
- Shower compartment with automatic pump out
- Extractor fan
- Window with opening porthole
- Manual tension venetian blind

- LED overhead lighting (24v)
- Bathroom accessories
- Solid Surface flooring

FORWARD STATEROOM

- Large double bed with drawers below (option of scissor berths)
- Wardrobe with shelves
- Dressing table
- Mirror
- Storage lockers and drawers
- Window with opening porthole
- Manual tension venetian blind
- Deck hatch with integrated skylight and blind
- LED overhead lighting (24v)
- Individual berth lights
- 220/240v outlets (2)
- Fitted carpet

EN-SUITE BATHROOM

- Wash hand basin with Solid Surface vanity top
- Mirror
- Storage lockers
- Shower compartment with automatic pump

- out
- Extractor fan
- Window with opening porthole
- Manual tension venetian blind
- LED overhead lighting (24v)
- Bathroom accessories
- Solid Surface flooring

STARBOARD GUEST CABIN

- Two single bunk beds
- Wardrobe with shelves
- Mirror
- Storage lockers
- Window with opening porthole
- Manual tension venetian blinds
- LED overhead lighting (24v)
- Individual berth lights
- 220/240v outlets (2)
- Fitted carpet

POWER AND DRIVE SYSTEMS

- Twin Volvo IPS contra rotating propellers via pod drive
- Engine room lighting
- Engine room access hatch and ladder
- Power-assisted electronic steering system

- with hydraulic back-up
- Trim tabs with indicators
- Electronic engine controls
- Joystick manoeuvring system
- Volvo IPS active corrosion protection system for pod drive
- Engine room extractor fan with electronic time delay

ELECTRICAL SYSTEMS

- 24 Volt:
- 4 x heavy-duty batteries for engine starting
- 4 x heavy-duty auxiliary batteries
- Battery link facility with remote control at helm position
- Both battery banks are charged using a voltage sensitive relay that parallels both battery banks when a charging source is present
- 40-amp 24v battery charger
- Remote battery master switches with control switch at main switch panel
- Circuit breakers on all circuits
- 12v voltage dropper for certain navigation and radio circuits

- 220/240 Volt:
- 4 kW generator in own sound shield with water cooled specially silenced exhaust
- Automatic fire extinguisher
- 50-amp shore support inlet
- Polarity check system
- Earth leakage safety trip
- Circuit breakers on all circuits
- Power points (240v) in: owner's stateroom, guest cabins, galley and saloon area
- Shaver points in all bathrooms

FUEL SYSTEM

- Fuel tanks (in NS8 marine grade alloy) with interconnection system giving 406 gal/488 US gal/1,850l capacity
- Fuel fillers on port and starboard side decks
- High-capacity Simplex fuel filter with water trap and change-over valves, water warning sensor connected to audible and visual warning lights at both helm stations
- Remote fuel cocks in cockpit locker
- Fuel gauges at both helm stations

WATER SYSTEM

- Water tanks totalling 92 gal/111 US gal/420l

- plus 9 gal/11 US gal/45l hot water calorifier
- Water heated by engines and 240v immersion heater
- Automatic water pump with filter
- Pump main circuit breaker at AC/DC switch panel
- Water level gauge
- Deck filler
- Electric freshwater toilet system with holding tank, contents gauge and manual overboard discharge as well as dockside discharge system

EXTINGUISHERS / FIRE CONTROL SYSTEMS

- Automatic/manual override fire extinguishers in engine room with warning system at flybridge and lower helm positions
- Hand operated fire extinguishers (5) in owner's stateroom, forward stateroom, starboard guest cabin, galley and lower helm position
- BILGE PUMPS
-
- Automatic/manual override electric bilge pumps in engine room (2) and forward

- accommodation (4 in all)
- High-capacity manual bilge pump with valve system and suction points in same areas
- Electric bilge pumps have controls and warning lights at main helm and warning light with audible alarm at flybridge helm

OTHER STANDARD EQUIPMENT

- Ensign staff
- Fenders (6)
- Mooring warps (4)
- First Aid kit
- Tool kit
- Owner's manual and engine manual
- Quilted bedspreads supplied to all cabins
- Ship's document case
- Anchor winch back up handle

FINISHES

- Teak-laid decks to transom platform, cockpit deck, steps to side decks, steps to flybridge
- Timber-laid floor to galley (V-groove planked)
- Furniture in choice of Rovere oak or Alba oak wood with satin finish as standard.

- Silver oak or walnut wood with satin or gloss finishes available as an option
- Galley in specified choice of boat timber with option for lower portside galley units to be in HPL soft matt feel finish
- Solid Surface floors in all bathroom suites in guest accommodation
- White Solid Surface vanity tops in all bathroom suites in guest accommodation
- White Solid Surface galley countertop
- Choice of high-quality carpet and upholstery fabric from extensive range
- Curtains, manual tension blinds or sunscreens to all windows and portholes