

PRINCESS F70 • 2020

Ref:PBS2207

PRICE: €2,795,000 INC VAT



OPEN TO PART EXCHANGE • PRINCESS TECHNICAL ORIENTATION INCLUDED

Twin MAN V12 (2 x 1400hp) diesel engines • 4 cabins accommodating 8 guests plus crew cabin • Rovere Oak interior wood • Teak laid decks • Hydraulic transom platform • Underwater lights • Electro-hydraulic telescopic passerelle • 2 x Onan generators • Mastervolt Sine Wave inverter • Reverse cycle air-conditioning • Watermaker • Sleipner fin stabilisers

PLEASE CONTACT US FOR MORE INFORMATION ON THIS PRINCESS F70 FLYBRIDGE MOTOR YACHT FOR SALE

- Established over 40 years.
- Central agency for over 90 brokerage yachts for immediate delivery.
- Specialists in international delivery and the sourcing of yacht taxation advice.
- Access to the global Princess support network.

PRINCESS F70 SPECIFICATION

BUILDER/DESIGNER

Year: 2020
Construction: GRP

ENGINES

No. of Engines: 2
Make: MAN
Model: V12 1400
Fuel Type: Diesel
Hours: 660
Total Power: 2800 hp

ACCOMODATION

Cabins: 4
Heads: 3

DIMENSIONS

Length: 21.31 m / 70 ft 10 in
Beam: 5.38 m / 18 ft 7 in

TANKS

Water: 1 x 900 l
Fuel: 1 x 3406 l

LOCATION

Athens, Greece

INVENTORY

HULL

- White hull

DECK EQUIPMENT

- Williams 395 tender
- Vogue Eucalyptus external upholstery
- Hydraulically powered bimini top
- Electro-hydraulic telescopic passerelle 4.1m
- Teak-laid transom platform, cockpit deck, flybridge, flybridge stairway and stairs to side decks
- U-shaped cockpit seating and teak dining table

- Twin transom gates leading to bathing platform with electro-hydraulic raise/lower mechanism, foldaway swimming ladder, hot and cold shower
- Side boarding gates to cockpit area
- Hydraulic transom platform
- Third station control in cockpit
- Reversible electric anchor winch with foredeck, helm position and flybridge controls
- Self-stowing 40kg Delta anchor with 40m galvanised chain
- Lewmar chain counter to both stations
- Stern docking lights
- 4 underwater lights (Lumishore SMX53 white)
- U-shaped flybridge seating area with teak table
- L-shaped seat on flybridge which converts to sunbed
- Sunpad aft with storage below
- Wetbar including sink, Lava brick BBQ and drawer refrigerator
- Console and seat covers
- Stainless-steel cleats, fairleads and handrails
- Twin electric-powered sternline mooring winches
- Freshwater deck/anchor wash
- Foredeck escape hatch
- Foredeck seating and sunbathing area
- Fender lockers and foredeck rope locker
- LED deck level lighting
- Transom seat in teak with storage locker
- Lockable gas strut assisted hatch to engine room and lazarette
- Access to aft lazarette/optional crew cabin via transom door
- Liferaft stowage locker
- Cockpit cover

INTERIOR FITOUT

- Rovere oak interior wood
- Ice Crystal galley worktop
- Timber flooring to aft dinette area
- Mosquito screens

DECK SALOON

- Triple opening stainless-steel framed sliding doors to aft cockpit with integrated hinging window aft of galley
- U-shaped sofa and coffee table
- Two-seater sofa
- L-shaped seat opposite helm area with electric opening window to port
- Sideboard unit with bottle and glass storage, refrigerator and icemaker
- Aft dining area

OWNER'S STATEROOM

- Large double bed with drawers below
- Twin wardrobes with shelves
- Dressing table
- Sofa
- Overhead and concealed lighting
- Ensuite bathroom

FORWARD GUEST CABIN

- Large double bed with drawers below
- Wardrobe with shelves
- Dressing table with stool

- Deck hatch with skylight and blind
- Overhead and individual berth lights
- Ensuite bathroom

PORT AND STARBOARD GUEST CABINS

- Two single beds
- Starboard cabin has a powered conversion to double bed
- Wardrobe with shelves
- Storage lockers and drawers
- Overhead and concealed lighting
- Ensuite bathroom (with day access to starboard bathroom)

AFT CABIN FITOUT

- Two single beds with storage below
- Wardrobe with shelf
- Storage lockers and drawers
- Overhead and individual berth lights
- Ensuite bathroom with stall shower

INTERIOR EQUIPMENT

- 4-zone ceramic hob
- Combination microwave/conventional oven with grill
- Twin stainless-steel sinks with mixer tap
- Full height fridge/freezer
- Dishwasher
- Safe in master stateroom
- Heated towel in master stateroom bathroom

SHIP'S SYSTEMS

- Onan 19kW generator
- Additional 11kW Onan generator
- Mastervolt Sine Wave inverter 230V 1500w
- Additional Mastervolt inverter
- Reverse cycle air-conditioning
- Aft cabin air-conditioning
- 250lt/hr Parker watermaker
- Sleipner fin stabilisers VF800
- SH240 variable speed hydraulic sternthruster 240kgf
- Bow thruster (170kgf)
- CCTV camera
- 2 x battery chargers
- 5-bladed propellers in nickel aluminium bronze
- Power-assisted electro-hydraulic steering system with hydraulic back-up
- Additional back up pumps for fresh water, grey water, and air-conditioning pumps Trackvision KVH MS satellite antenna
- Electronic engine and gear shift controls
- Dripless shaft seals
- Engine room extractor fan with electronic time delay

PRINCESS F70 INVENTORY

NAVIGATION EQUIPMENT

- 4 Raymarine Axiom XL 16 15.6" (2 in each helm position)
- European version plotter charts
- International VHF
- Raymarine wind transducer
- AIS

AUDIO VISUAL EQUIPMENT

- Standard Fusion audio system
- Deck saloon - Entertainment centre incorporating 46" LED TV on electric raise/lower mechanism and DVD, radio/MP3 system with surround sound system
- Master stateroom - 40" LED TV and DVD, radio/MP3 system with surround sound
- Flybridge - Radio/MP3 with waterproof speakers

BROKER COMMENTS

- Italian Leasing system in place

DISCLAIMER

In this case we are acting as Brokers only.

The Vendor is not selling in the course of a business. Whilst every care has been taken in their preparation, the correctness of these particulars is not guaranteed. The particulars are intended only as a guide and they do not constitute a term of any contract. A prospective buyer is strongly advised to check the particulars and where appropriate at his own expense to employ a qualified Marine Surveyor to carry out a survey and/or to have an engine trial conducted which if conducted by us shall not imply any liability for such engine on our part.

PRINCESS F70 PHOTOS



EST 1964

OUR KNOWLEDGE IS YOUR LUXURY

> **OPEN TO PART EXCHANGE**

WE CAN HELP SPEED UP THE SALE THROUGH OUR OFFER TO UNDERWRITE A PART-EXCHANGE AGAINST THE BROKERAGE YACHT

> **PRINCESS TECHNICAL ORIENTATION INCLUDED**

AT NO ADDITIONAL COST, REGARDLESS OF WHERE THIS YACHT IS LOCATED, WE OFFER A COMPREHENSIVE TECHNICAL INTRODUCTION TO YOUR PURCHASE

> **PROFESSIONAL PHOTOGRAPHY, VIDEO & 3D TOUR AVAILABLE**

VIEW IMAGERY, VIDEO AND A 3D TOUR/WALKTHROUGH OF THIS YACHT ONLINE



brokerage@princess.co.uk

+44 (0)1489 557755

www.princessmotoryachtsales.com



PRINCESS F70 PHOTOS



PRINCESS F70 PHOTOS













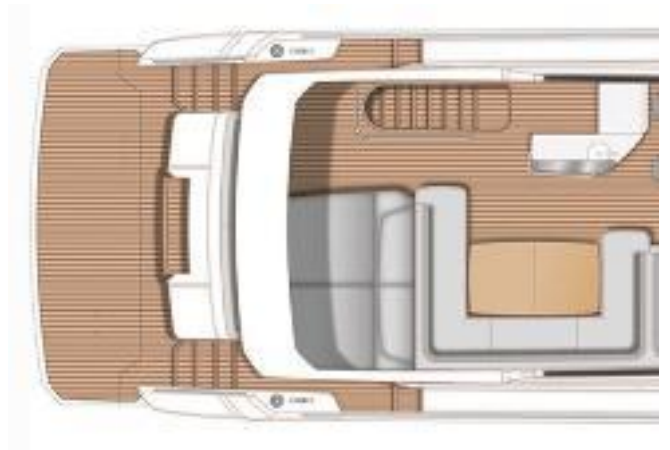



PRINCESS

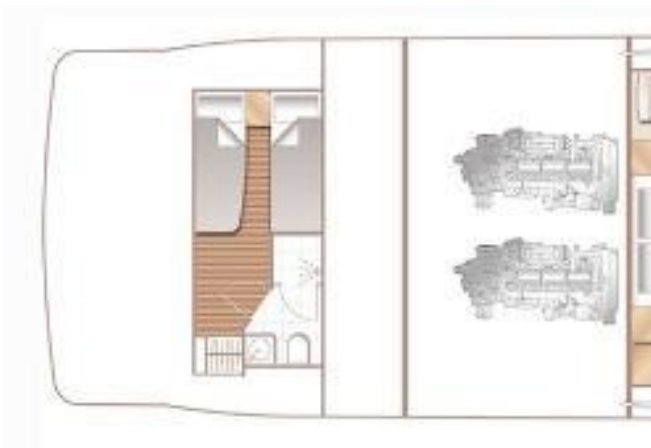
PRINCESS MOTOR YACHT SALES







Manufacturer Provided Image: Princess F70 Flybridge Layout



Manufacturer Provided Image: Princess F70 Lower Deck Layout Plan

FINANCE AND INSURANCE
AVAILABLE ON THIS
PRINCESS YACHT

Contact
finance@princess.co.uk
insurance@princess.co.uk
for information.



PRINCESS MOTOR YACHT SALES

